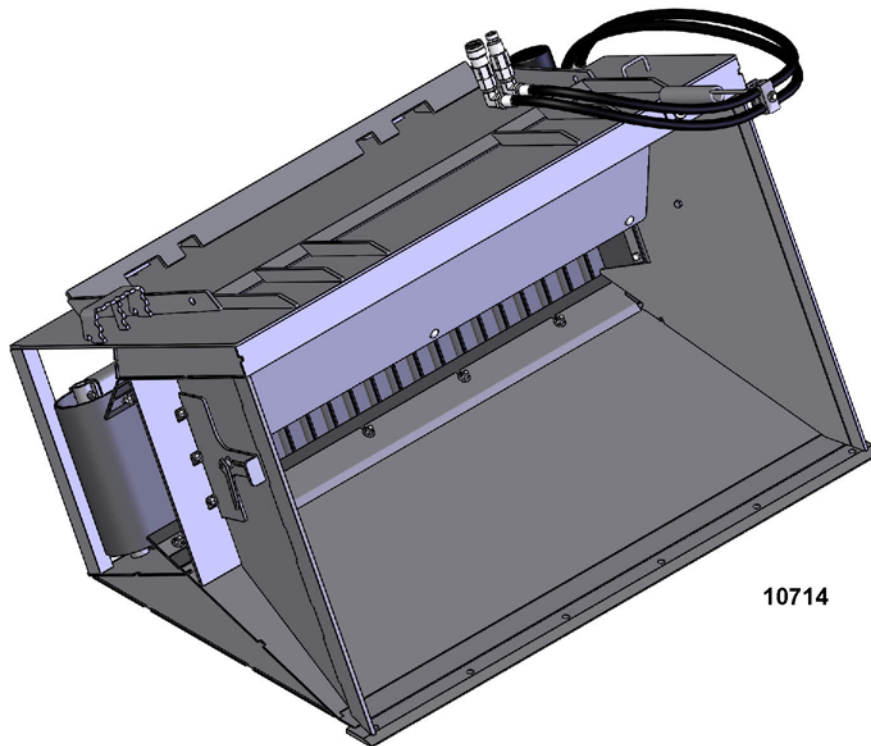




**SPARTAN  
EQUIPMENT®**

# OPERATOR'S AND PARTS MANUAL

## POWER SIDE DISCHARGE (PSD) BUCKETS SAND & SAWDUST



10714

**SERIAL NUMBER:** \_\_\_\_\_

**MODEL NUMBER:** \_\_\_\_\_

**Manual Number: 51-10038**  
**Part Number: 10714 & 10715**  
**Rev. 3**

## Notes

# TABLE OF CONTENTS

INTRODUCTION .....	2
GENERAL INFORMATION .....	2
SERIAL NUMBER .....	2
OWNER AND OPERATOR SAFETY INFORMATION	
SAFETY STATEMENTS .....	3
SAFETY PRECAUTIONS .....	3-5
SAFETY SIGNS .....	6-7
SPECIFICATIONS .....	8-9
MOUNTING .....	10
OPERATION .....	11
MAINTENANCE .....	12
MAINTENANCE LOG .....	13
SERVICE .....	13
SAND BUCKET .....	14-17
SAWDUST BUCKET .....	18-23
WARRANTY .....	24

# INTRODUCTION

Congratulations on your purchase of a new SPARTAN EQUIPMENT Power Side Discharge Bucket. This product has been designed and built to collect and discharge sawdust, mulch, and sand into barns, stalls, orchards, or back fill. Capable of spreading a variety of materials such as silage, stone or topsoil. You or any other person who will be assembling, operating, maintaining, or working with this product are required to read and completely understand the information and instructions contained in this manual. If anyone does not fully understand every part of this manual, please obtain further assistance by contacting the dealer from which this product was purchased or by contacting SPARTAN EQUIPMENT at the telephone number or address listed on the cover of this manual. Keep this manual available for reference whenever this product is being handled or used. Provide this manual to any new owners and/or operators. This manual covers model () 10714 & 10715.

## GENERAL INFORMATION

The purpose of this manual is to assist in assembling, mounting, operating, and maintaining your attachment. Read this manual carefully to obtain valuable information and instructions that will help you achieve years of safe and dependable service.

The illustrations and data used in this manual were current at the time of printing, but due to possible engineering and/or production changes, this product may vary slightly in detail. SPARTAN EQUIPMENT reserves the right to redesign and/or change components as may be necessary without notification to anyone. Throughout this manual, references may be made to:

Prime Mover	The engine-driven machine to which this product must be attached.
Right, Left, Front, Rear	Directions that are determined in relation to the operator of the equipment when seated in the normal operation position.
<b>IMPORTANT</b>	Precautions that must be followed to prevent substandard performance.

## SERIAL NUMBER LOCATION

Always refer to the model and serial number when ordering parts or requesting information from your dealer. See Safety Signs section for the location of the serial number plate for this product.

Reference Information	
Model Number	Prime Mover Make & Model
Serial Number	Loader Model
Date Purchased	Loader Serial Number

# SAFETY STATEMENTS



**THIS SYMBOL BY ITSELF OR WITH A WARNING WORD THROUGHOUT THIS MANUAL IS USED TO CALL YOUR ATTENTION TO INSTRUCTIONS INVOLVING YOUR PERSONAL SAFETY OR THE SAFETY OF OTHERS. FAILURE TO FOLLOW THESE INSTRUCTIONS CAN RESULT IN INJURY OR DEATH.**



**DANGER!** THIS SIGNAL WORD IS USED WHERE SERIOUS INJURY OR DEATH WILL RESULT IF THE INSTRUCTIONS ARE NOT FOLLOWED PROPERLY.



**WARNING!** THIS SIGNAL WORD IS USED WHERE SERIOUS INJURY OR DEATH COULD RESULT IF THE INSTRUCTIONS ARE NOT FOLLOWED PROPERLY.



**CAUTION!** THIS SIGNAL WORD IS USED WHERE MINOR INJURY COULD RESULT IF THE INSTRUCTIONS ARE NOT FOLLOWED PROPERLY.

**NOTICE!** NOTICE INDICATES A PROPERTY DAMAGE MESSAGE.

## GENERAL SAFETY PRECAUTIONS

### **WARNING! READ MANUAL PRIOR TO INSTALLATION**



Improper installation, operation, or maintenance of this equipment could result in serious injury or death. Operators and maintenance personnel should read this manual, as well as all manuals related to this equipment and the prime mover thoroughly before beginning installation, operation, or maintenance. **FOLLOW ALL SAFETY INSTRUCTIONS IN THIS MANUAL AND THE PRIME MOVER'S MANUAL(S).**



### **READ AND UNDERSTAND ALL SAFETY STATEMENTS**

Read all safety decals and safety statements in all manuals prior to operating or working on this equipment. Know and obey all OSHA regulations, local laws, and other professional guidelines for your operation. Know and follow good work practices when assembling, maintaining, repairing, mounting, removing, or operating this equipment.



### **KNOW YOUR EQUIPMENT**

Know your equipment's capabilities, dimensions and operations before operating. Visually inspect your equipment before you start, and never operate equipment that is not in proper working order with all safety devices intact. Check all hardware to ensure it is tight. Make certain that all locking pins, latches, and connection devices are properly installed and secured. Remove and replace any damaged, fatigued, or excessively worn parts. Make certain all safety decals are in place and are legible. Keep decals clean, and replace them if they become worn and hard to read.

## GENERAL SAFETY PRECAUTIONS

### WARNING! PROTECT AGAINST FLYING DEBRIS



Always wear proper safety glasses, goggles or a face shield when driving pins in or out, or when any operation causes dust, flying debris, or any other hazardous material.

### WARNING! LOWER OR SUPPORT RAISED EQUIPMENT



Do not work under raised booms without supporting them. Do not use support material made of concrete blocks, logs, buckets, barrels or any other material that could suddenly collapse or shift positions. Make sure support material is solid, not decayed, warped, twisted, or tapered. Lower booms to ground level or onto blocks. Lower booms and attachments to the ground before leaving the cab or operator's station.

### WARNING! USE CARE WITH HYDRAULIC FLUID PRESSURE

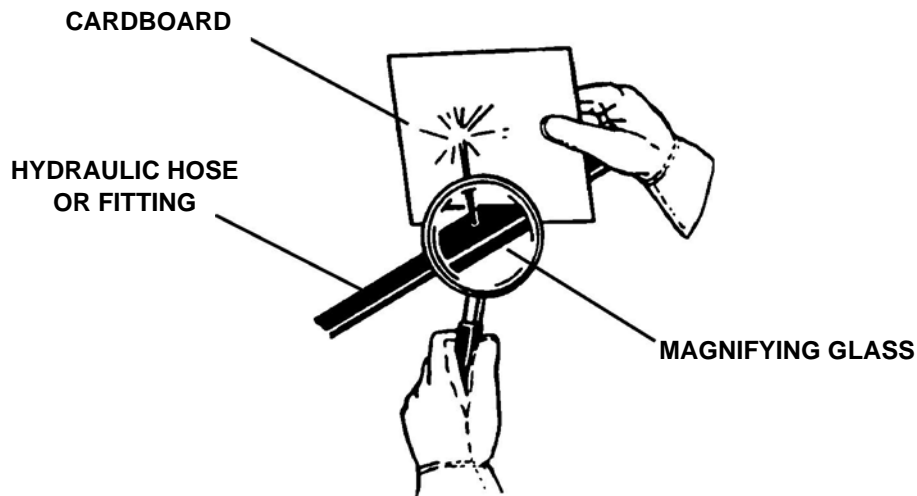


Hydraulic fluid under pressure can penetrate the skin and cause serious injury or death. Hydraulic leaks under pressure may not be visible. Before connecting or disconnecting hydraulic hoses, read your prime movers operator's manual for detailed instructions on connecting and disconnecting hydraulic hoses or fittings.

Keep unprotected body parts, such as face, eyes, and arms as far away as possible from a suspected leak. Flesh injected with hydraulic fluid may develop gangrene or other permanent disabilities.

If injured by injected fluid, see a doctor at once. If your doctor is not familiar with this type of injury, ask him to research immediately to determine proper treatment. Wear safety glasses, protective clothing, and use a sound piece of cardboard or wood when searching for hydraulic leaks. **DO NOT USE YOUR HANDS!**

**SEE ILLUSTRATION.**



## GENERAL SAFETY PRECAUTIONS

### **WARNING! DO NOT MODIFY MACHINE OR ATTACHMENTS**



Modifications may weaken the integrity of the attachment and may impair the function, safety, life, and performance of the attachment. When making repairs, use only the manufacturer's genuine parts, following authorized instructions. Other parts may be substandard in fit and quality. Never modify any ROPS (Roll Over Protection Structure) or FOPS (Falling Object Protective Structure) equipment or device. Any modifications must be authorized in writing by the manufacturer.

### **WARNING! SAFELY MAINTAIN AND REPAIR EQUIPMENT**



Do not wear loose clothing, or any accessories that can catch in moving parts. If you have long hair, cover or secure it so that it does not become entangled in the equipment.

Work on a level surface in a well-lit area.

Use properly grounded electrical outlets and tools.

Use the correct tool for the job at hand. Make sure they are in good condition for the task required.

Wear the protective equipment specified by the tool manufacturer.

### **WARNING! SAFELY OPERATE EQUIPMENT**



Do not operate equipment until you are completely trained by a qualified operator in how to use the controls, know its capabilities, dimensions, and all safety requirements. See your machine's manual for these instructions.

Keep all step plates, grab bars, pedals, and controls free of dirt, grease, debris, and oil.

Never allow anyone to be around the equipment when it is operating. Do not allow riders on the attachment or the prime mover.

Do not operate the equipment from anywhere other than the correct operators position.

Never leave equipment unattended with the engine running or with this attachment in a raised position.

Do not alter or remove any safety feature from the prime mover or this attachment. Know your work site safety rules as well as traffic rules and flow. When in doubt on any safety issue, contact your supervisor or safety coordinator for an explanation.

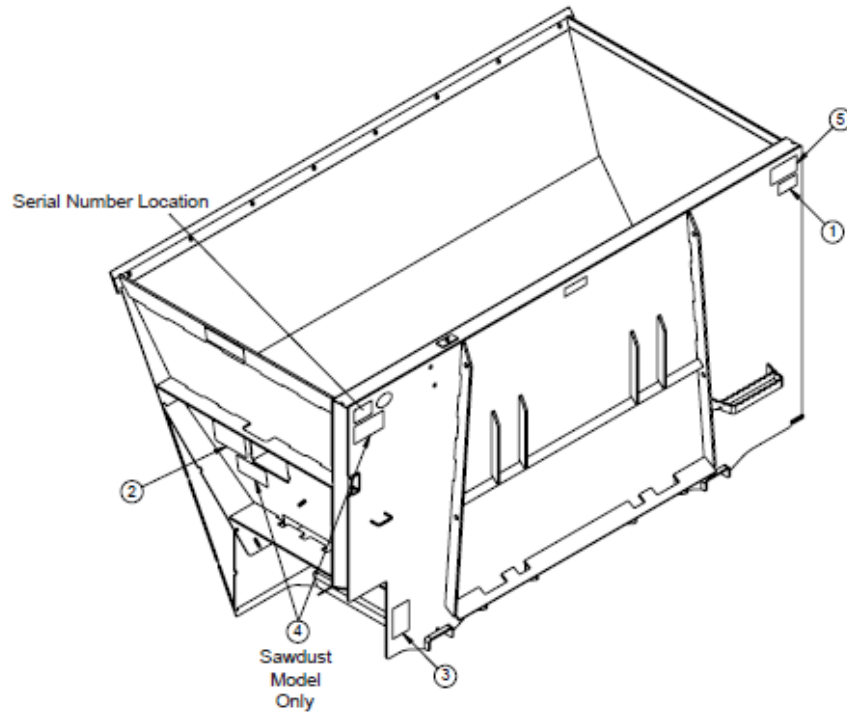
### **WARNING! KNOW WHERE UTILITIES ARE**



Observe overhead electrical and other utility lines. Be sure equipment will clear them. When digging, call your local utilities for location of buried utility lines, gas, water, and sewer, as well as any other hazard you may encounter.

# SAFETY SIGN LOCATIONS

The diagram on this page shows the location of the decals used on the SPARTAN EQUIPMENT Power Side Discharge Bucket. The decals are identified by their part numbers, with reductions of the actual decals located on the following page. Use this information to order replacements for lost or damaged decals. Be sure to read all decals before operating the attachment. They contain information you need to know for both safety and product longevity.



## INSTRUCTIONS

Keep all safety signs clean and legible.

Replace all missing, illegible, or damaged safety signs.

Replacement parts for parts with safety signs attached must also have safety signs attached.

Safety signs are available, free of charge, from your dealer or from SPARTAN EQUIPMENT.

## PLACEMENT OR REPLACEMENT OF SAFETY SIGNS

1. Clean the area of application with non-flammable solvent, and then wash the same area with soap and water.
3. Allow the surface to fully dry.
4. Remove the backing from the safety sign, exposing the adhesive surface.
5. Apply the safety sign to the position shown in the diagram above and smooth out any bubbles.



## SAFETY SIGNS



1. 40993  
IMPORTANT! SPECIFICATIONS



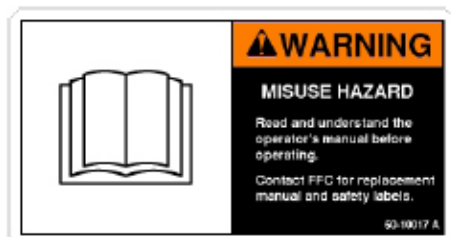
2. 41116  
DANGER! ENTANGLEMENT/FLYING DEBRIS



3. 50-0724 WARNING! HIGH PRESSURE FLUID



4. 50-0725  
WARNING! HIGH PRESSURE FLUID



5. 50-10017  
WARNING! READ MANUAL

ITEM	QTY.	Sand	Sawdust	DESCRIPTION
1	1		40993	LABEL, IMPORTANT! SPECIFICATIONS
2	2		41116	LABEL, DANGER! ENTANGLEMENT/FLYING DEBRIS
3	1		50-0724	LABEL, WARNING! HIGH PRESSURE FLUID
4	Varies	0	(2) 50-0725	LABEL, WARNING! HIGH PRESSURE FLUID
5	1		50-10017	LABEL, WARNING! READ MANUAL

NOTE: All parts are the same as Sawdust except for those parts numbered under the Sand model.

# PRIME MOVER/LOADER SPECIFICATIONS

**IMPORTANT**

Exceeding any of the maximum recommended prime mover/loader specifications **CAN** result in damage to this product and **WILL** void all SPARTAN EQUIPMENT warranties.

DESCRIPTION	SPECIFICATIONS	
POWER SIDE DISCHARGE BUCKETS	10714 SAND	10715 SAWDUST
Operating Weight of Prime Mover	11,000 lbs. maximum	11,000 lbs. maximum
Lift Capacity of Prime Mover's Loader	9,500 lbs. maximum	9,500 lbs. maximum
Rear Ballast	As required to maintain full prime mover stability. (Note the shipping weight of your model, then see the operator's manual(s) for your prime mover and loader for ballasting needs.)	

## ATTACHMENT SPECIFICATIONS

Model Number	Overall Width	Overall Height	Overall Depth	Operating Weight
10714-60	60.0"	31.7"	39.5"	8181bs.
10714-72	72.0"	31.7"	39.5"	9201bs.
10715-72	72.0"	45.3"	47.6"	11751bs.
10715-84	84.0"	45.3"	47.6"	13441bs.

Side Discharge Bucket Model	Capacity (cu. yds)	*Material Performance Rating						GPM Range
		Sand	Aggregate	Topsoil	Sawdust	Mulch	Silage	
60" Sand	.55	Best	Good	Good	Poor	Poor	Fair	15-25
72" Sand	.68	Best	Good	Good	Poor	Poor	Fair	15-25
72" Sawdust	1.34	Fair	Fair	Fair	Best	Best	Good	15-25
84" Sawdust	1.58	Fair	Fair	Fair	Best	Best	Good	15-25

\*Ratings consider the material to be in a typical working condition with respect to moisture content. In most cases as moisture content increases performance will be adversely affected.

# BOLT TORQUE SPECIFICATIONS

## GENERAL TORQUE SPECIFICATION TABLES

Use the following charts when determining bolt torque specifications when special torques are not given. Always use grade 5 or better when replacing bolts.

## SAE BOLT TORQUE SPECIFICATIONS

NOTE: The following torque values are for use with extreme pressure lubricants, plating or hard washer applications Increase torque 15 when using hardware that is unplated and either dry or lubricated with engine oil.

Bolt Size		SAE GRADE 5 TORQUE				SAE GRADE 8 TORQUE				Bolt head identification marks as per grade. NOTE: Manufacturing Marks Will Vary
Inches	Millimeters	Pounds Feet		Newton-Meters		Pounds Feet		Newton-Meters		
1/4	6.35	8	9	11	12	10	13	14	18	
5/16	7.94	14	17	19	23	20	25	27	34	
3/8	9.53	30	36	41	49	38	46	52	62	
7/16	11.11	46	54	62	73	60	71	81	96	
1/2	12.70	68	82	92	111	94	112	127	152	
9/16	14.29	94	112	127	152	136	163	184	221	
5/8	15.88	128	153	174	207	187	224	254	304	
3/4	19.05	230	275	312	373	323	395	438	536	
7/8	22.23	340	408	461	553	510	612	691	830	
1	25.40	493	592	668	803	765	918	1037	1245	
1-1/8	25.58	680	748	922	1014	1088	1224	1475	1660	
1-1/4	31.75	952	1054	1291	1429	1547	1700	2097	2305	
1-3/8	34.93	1241	1428	1683	1936	2023	2312	2743	3135	
1-1/2	38.10	1649	1870	2236	2535	2686	3026	3642	4103	

## METRIC BOLT TORQUE SPECIFICATIONS

NOTE: The following torque values are for use with metric hardware that is unplated and either dry or lubricated with engine oil. Reduce torque 15% when using hardware that has extreme pressure lubricants, plating or hard washer applications.

Bolt head identification marks as per grade.		

Size of Bolt	Grade No.	Pitch (mm)	Pounds Feet	Newton-Meters	Pitch (mm)	Pounds Feet	Newton-Meters
M6	5.6	1.0	3.6-5.8	4.9-7.9	-	-	-
	8.8		5.8-4	7.9-12.7		-	-
	10.9		7.2-10	9.8-13.6		-	-
M8	5.6	1.25	7.2-14	9.8-19	1.0	12-17	16.3-23
	8.8		17-22	23-29.8		19-27	25.7-36.6
	10.9		20-26	27.1-35.2		22-31	29.8-42
M10	5.6	1.5	20-25	27.1-33.9	1.25	20-29	27.1-39.3
	8.8		34-40	46.1-54.2		35-47	47.4-63.7
	10.9		38-46	51.5-62.3		40-52	54.2-70.5
M12	5.6	1.75	28-34	37.9-46.1	1.25	31-41	42-55.6
	8.8		51-59	69.1-79.9		56-68	75.9-92.1
	10.9		57-66	77.2-89.4		62-75	84-101.6
M14	5.6	2.0	49-56	66.4-75.9	1.5	52-64	70.5-86.7
	8.8		81-93	109.8-126		90-106	122-143.6
	10.9		96-109	130.1-147.7		107-124	145-168
M16	5.6	2.0	67-77	90.8-104.3	1.5	69-83	93.5-112.5
	8.8		116-130	157.2-176.2		120-138	162.6-187
	10.9		129-145	174.8-196.5		140-158	189.7-214.1
M18	5.6	2.0	88-100	119.2-136	1.5	100-117	136-158.5
	8.8		150-168	203.3-227.6		177-199	239.8-269.6
	10.9		175-194	237.1-262.9		202-231	273.7-313
M20	5.6	2.5	108-130	146.3-176.2	1.5	132-150	178.9-203.3
	8.8		186-205	252-277.8		206-242	279.1-327.9
	10.9		213-249	288.6-337.4		246-289	333.3-391.6

## MOUNTING

### WARNING! READ MANUAL PRIOR TO INSTALLATION



Improper installation, operation, or maintenance of this equipment could result in serious injury or death. Operators and maintenance personnel should read this manual, as well as all manuals related to this equipment and the prime mover/loader thoroughly before beginning installation, operation, or maintenance. **FOLLOW ALL SAFETY INSTRUCTIONS IN THIS MANUAL AND THE PRIME MOVER'S MANUAL(S).**

1. Place this product on a firm, level surface that is large enough to safely accommodate this product, your prime mover/loader and all workers involved in the mounting process.
2. Refer to the operator's manual(s) for your prime mover and loader. Follow the mounting instructions contained therein.
3. Carefully raise the loader and cycle the tilt cylinders to check clearances and to verify that all mounting procedures have been successfully completed.

# OPERATION

**Read all Safety Precautions before operating your new attachment.  
Refer to your machines operator's manual for attachment operation.**

The power side discharge buckets are designed and built to collect and discharge sawdust, mulch, and sand into barns, stalls, orchards, or back fill. Capable of spreading a variety of materials such as silage, stone or topsoil.

1. Select side for discharge.
2. Enter machine, fasten seat belt, start engine and disengage parking brake.
3. Tilt power side discharge bucket forward until cutting edge of bucket rest on ground. Use power side discharge bucket guide bars on side to level bucket.
4. Increase engine speed and slowly drive into material.
5. Tilt attachment back to discharge material.

*NOTE: Increase engine rpm to increase discharge belt speed.*

6. Activate the auxiliary hydraulics with engine at idle.

## CHANGING DISCHARGE DOOR

**NOTICE! Avoid damage to power side discharge bucket components. Be sure closed side discharge door is not in contact with discharge belt.**

1. Determine preferred direction of discharged material. Open and close appropriate discharge doors.

*NOTICE! Material will discharge through a closed discharge door. The closed position should be used on both ends if transport leakage is undesirable.*

2. To close discharge bucket door: Loosen lock handle on open side discharge bucket door and lower to the closed position. Tighten lock handle on shut side discharge bucket door.
3. To open closed side discharge bucket door: Loosen lock handle on closed side discharge bucket door and raise to the open position. Tighten lock handle on open side discharge bucket door.

# MAINTENANCE



## KNOW YOUR EQUIPMENT

Know your equipment's capabilities, dimensions and operations before operating. Visually inspect your equipment before you start, and never operate equipment that is not in proper working order with all safety devices intact. Check all hardware to ensure it is tight. Make certain that all locking pins, latches, and connection devices are properly installed and secured. Remove and replace any damaged, fatigued, or excessively worn parts. Make certain all safety decals are in place and are legible. Keep decals clean, and replace them if they become worn and hard to read.

## BEFORE EACH USE

Make sure that all nuts and bolts are in place and properly tightened.  
Make sure that all other fasteners are in place and are performing their specified function.  
Make sure that all safety signs are in place, are clean, and are legible.  
Replace any damaged parts and excessively worn parts.

**NOTICE!**      **When replacing parts, use only factory approved replacement parts. Manufacturer will not claim responsibility for use of unapproved parts or accessories and/or other damages as a result of their use.**

## LUBRICATION

The only lubrication your attachment may need is the greasing of the Sand and Sawdust conveyor drive 4-bolt flange bearing (item 6 or 10) and the Sawdust agitator drive 2-bolt flange bearing (item 36). A grease fitting has been installed to facilitate this task. We recommend greasing all grease fittings after the initial 8 hours of operation and then every 40 hours of operation thereafter.

## DAILY OR EVERY 8 HOURS OF OPERATION

Replace any missing bolts or nuts with approved replacement parts.  
Check hydraulic system for leaks. (If so equipped.)  
Visually inspect the machine for worn parts or cracked welds. Repair as necessary.  
Replace any damaged, illegible or missing decals.

## TIGHTENING DRIVE BELT

1. Empty side discharge bucket to avoid attachment tipping.
2. Lower attachment onto firm level ground.
3. Relieve hydraulic pressure. Disconnect hydraulic hoses and release Quick-Tatch™.
4. Remove and back away from attachment. Turn off and exit machine.

**CAUTION!**      **Avoid crushing injuries, secure attachment while disconnected from machine.**



**NOTICE!**      **Avoid damage to side discharge bucket. Tension must be equal on both sides of drive belt. Adjust nuts evenly to apply same tension on both sides of drive belt.**

5. Adjust drive belt tension nuts (item 46 & 55) evenly to apply same tension on both sides of drive belt.

# MAINTENANCE

## MAINTENANCE RECORD

Use this log to record maintenance performed on the attachment.

Date	Maintenance Procedure Performed	Performed by	Comments

## SERVICE

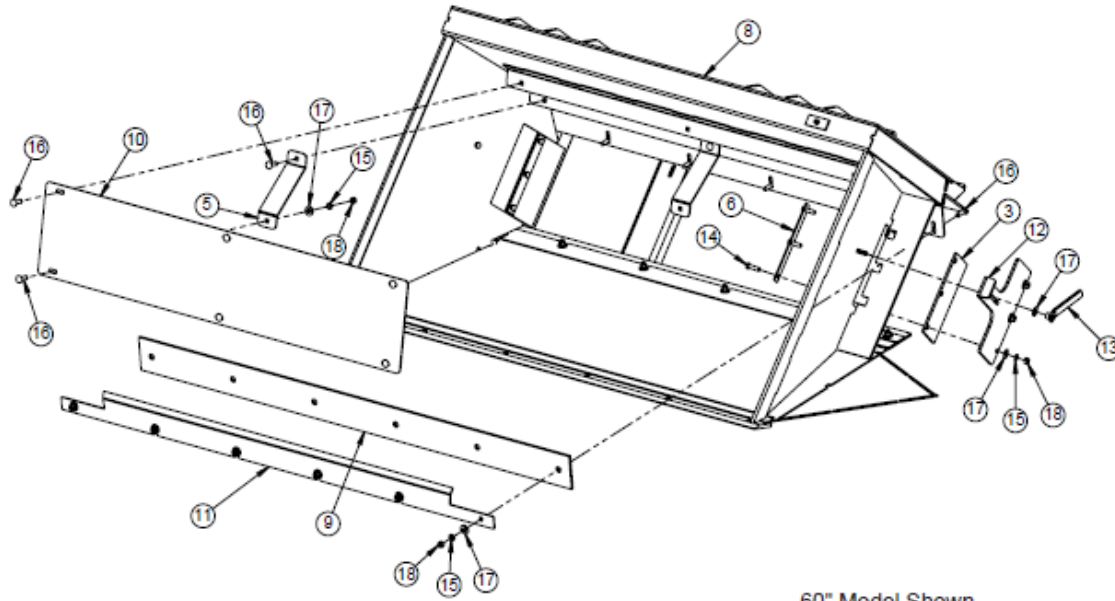
### WARNING! DO NOT MODIFY MACHINE OR ATTACHMENTS



Modifications may weaken the integrity of the and may impair the function, safety, life, and performance of the. When making repairs, use only the manufacturer's genuine parts, following authorized instructions. Other parts may be substandard in fit and quality. Never modify any ROPS (Roll Over Protection Structure) or FOPS (Falling Object Protective Structure) equipment or device. Any modifications must be authorized in writing by the manufacturer.

6.

## SAND BUCKET



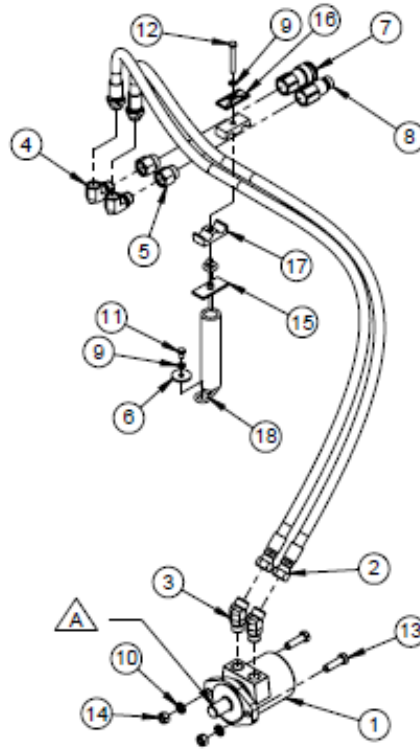
60" Model Shown

ITEM	QTY.	60 inch	72 inch	DESCRIPTION
3	2		13-53070	Rubber, Gate
5	3		13-53079	Cascade Support Plate
6	2		13-53082	Plate, Retainer Strap
* 8	1	13-53463	13-53462	Weld, Sand Bucket
9	2	13-53239	13-53069	Rubber, with Holes
10	1	13-53240	13-53077	Plate, Cascade
11	2	13-53241	13-53228	Plate, Seal
12	2		13-53472	Plate, Discharge Barrier
13	2		M5454	Caster Handle
14	6		P100605	Bolt, Hex, 3/8-16 x 1 1/4
15	Varies	27	(29) P851106	Washer, Lock, 3/8
16	Varies	21	(23) RHW2207	Bolt, Carriage, Gr5, .31-16 x 1.25
17	Varies	29	(31) RHW5262	Washer, Flat, Gr5, .38
18	Varies	27	(29) RHW7201	Hex, Nut, Gr5, .38-16


NOTE: All parts are the same as 72 inch except for those parts numbered under the other model. \* Specify Required Mounting when ordering



## SAND BUCKET HYDRAULICS

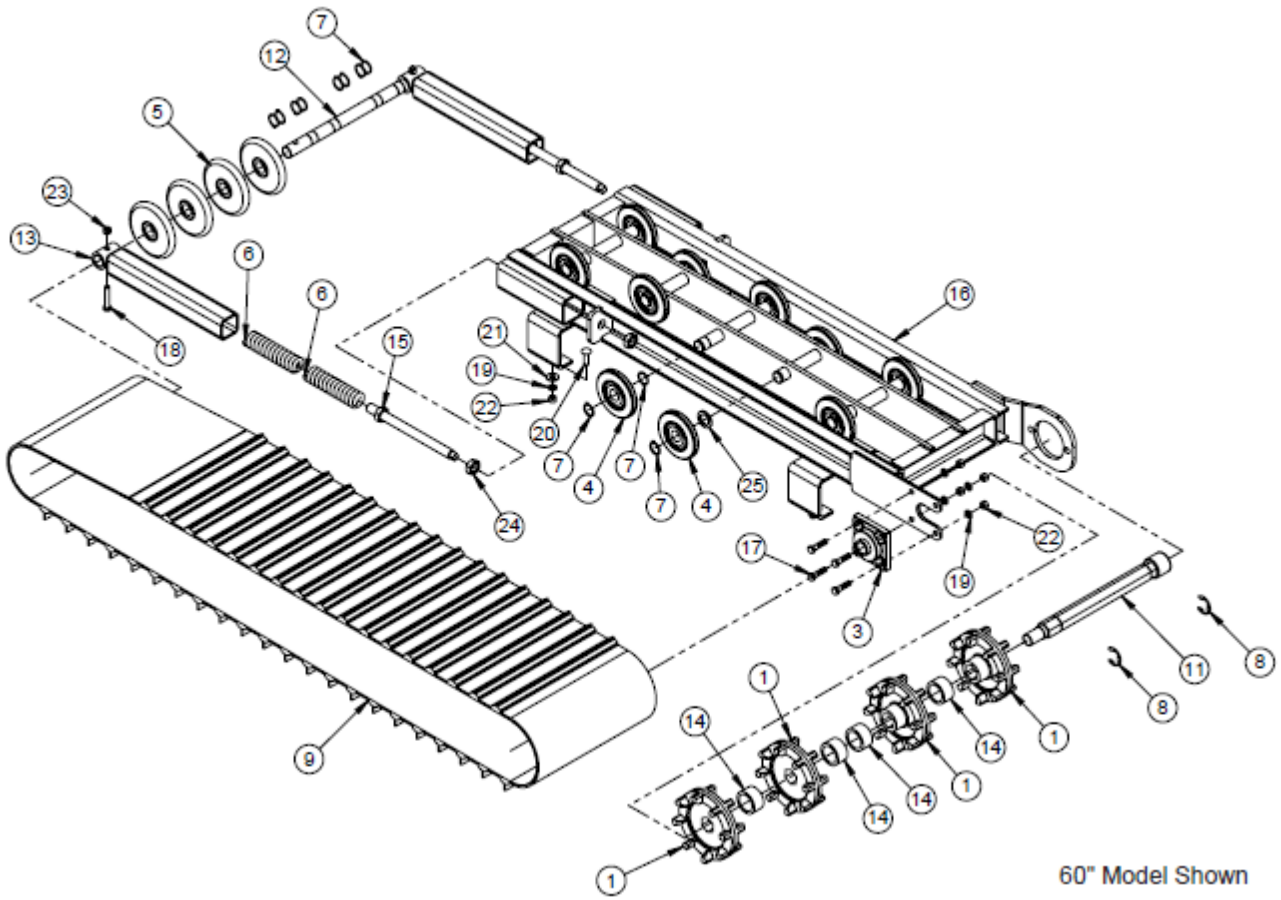


ITEM	QTY.	60 inch	72 inch	DESCRIPTION
1	1		03-10148	Motor, Conveyor, 5.0
2	2		03-10149	Hose, .5 x 100, 10FF-10MB, 4K
3	2		03-10150	Elbow, 45°, 10MB-10MF
4	2		03-4164	Elbow, 90°, 10FB-10MB
5	2		03-4618	Fitting, 10FB-12MB
6	1		105840	Washer, Fender
7	1		P272670	Quick Disconnect, 12FF, Female, 12FB
8	1		P272671	Quick Disconnect, 12FF, Male, 12FB
9	2		P851105	Washer, Lock, 5/16
10	2		P851108	Washer, Lock, 1/2
11	1		RHW1101	Screw, Hex, Gr5, .31-18 x .5
12	1		RHW1112	Screw, Hex, Gr5, .31-18 x 2.5
13	2		RHW1406	Screw, Hex, Gr5, .5-13 x 1.75
14	2		RHW7401	Nut, Hex, Gr5, .5-13
15	1		RHW8613	Weld, Plate
16	1		RHW8614	Plate, Cover
17	1		RHW8616	Hose, Cradle
18	1		RHW8618	Hose, Spring

NOTE: All parts are the same as 72 inch except for those parts numbered under the other model.  
Apply Anti-Seize  where noted.

7.

# SAND BUCKET CONVEYOR



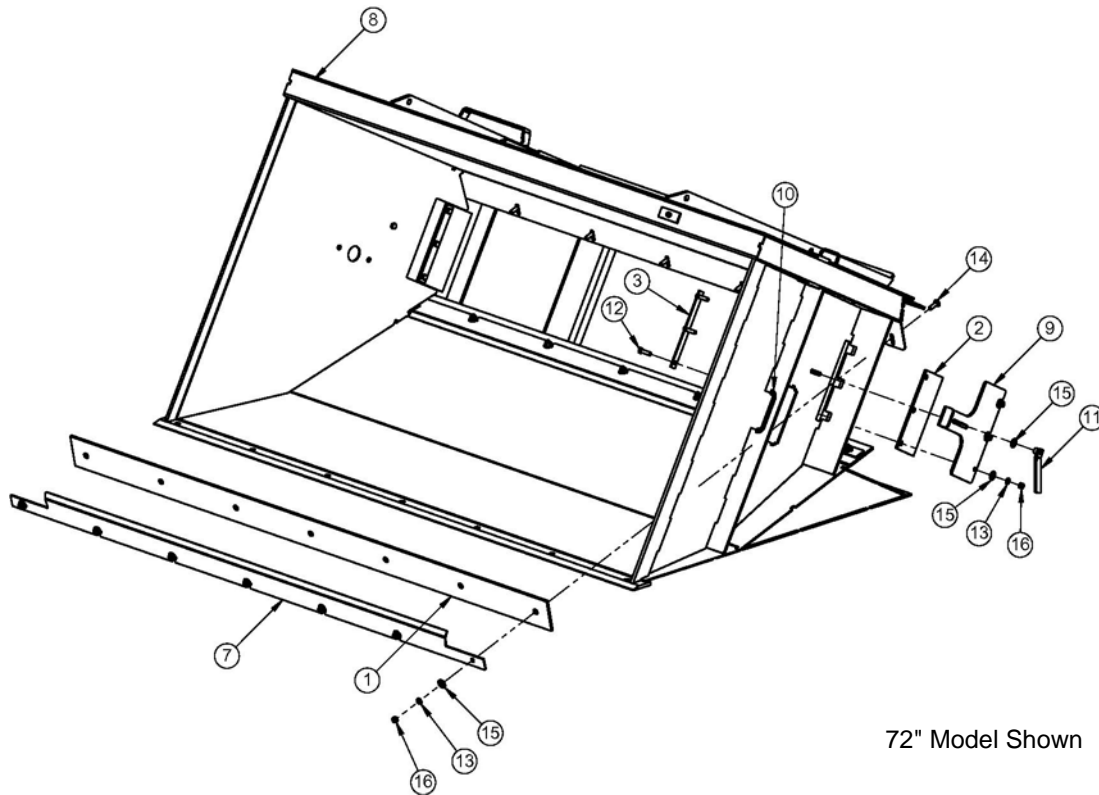
## SAND BUCKET CONVEYOR

ITEM	QTY.	60 inch	72 inch	DESCRIPTION
1	4		07-10173	Sprocket, 8 Tooth, 2.52 Pitch
3	1		07-10176	Bearing, 4 Bolt, 1.25
4	Varies	10	(12) 07-10181	Roller, Urethane
5	4		07-10182	Idler, Wheel Bearing
6	4		07-10183	Idler, Spring
7	Varies	24	(28) 07-10184	Ring, External Retaining
8	2		07-10185	E-Clip, 1.19 Shaft .062
9	1	07-10190	07-10174	Belt, Sand
11	1		13-53036	Weld, Hex Drive
12	1		13-53043	Rod, 1 x 15.5
13	2		13-53044	Weld, Idler, Arm
14	4		13-53046	Tube, Round, 2 x 1.5 x 1.06
15	2		13-53083	Weld, Spring, Tensioner
16	1	13-53237	13-53033	Weld, Conveyor Frame
17	4		P100606	Bolt, Hex, Gr5, 3/8 x 1 1/2
18	2		P100608	Bolt, Hex, 3/8-16 x 2
19	8		P851106	Washer, Lock, 3/8
20	4		RHW2207	Bolt, Carriage, Gr5, .31-16 x 1.25
21	4		RHW5262	Washer, Flat, Gr5, .38
22	8		RHW7201	Nut, Hex, Gr5, .38-16
23	2		RHW7203	Nut, Lock, Gr5, .38-16
24	4		RHW7704	Nut, Hex, Jam, Gr5, .75-10
25	4		RHW8603	Bushing, Machine, 1.5 x 1 x .13

NOTE: All parts are the same as 72 inch except for those parts numbered under the other model.

8.

## SAWDUST BUCKET



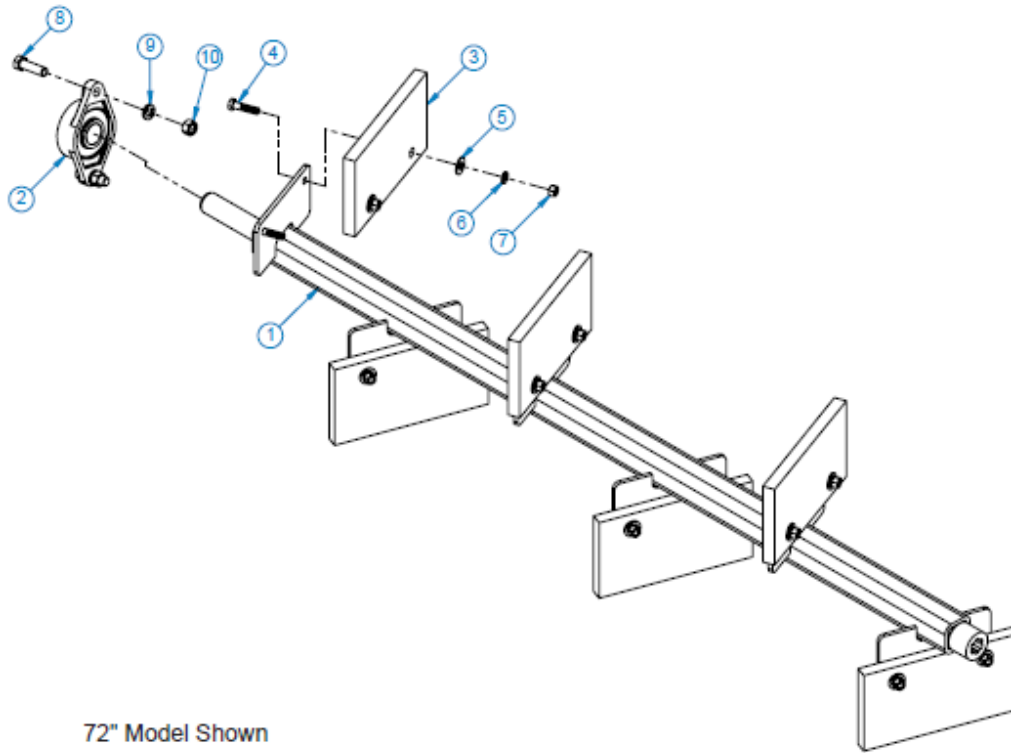
72" Model Shown

ITEM	QTY.	72 inch	84 inch	DESCRIPTION
1	2	13-53069	13-53143	Rubber, with Holes
2	2		13-53070	Rubber, Gate
3	2		13-53082	Plate, Retainer Strap
7	2	13-53228	13-53182	Plate, Seal
* 8	2	13-53464	13-53465	Weld, Sawdust Bucket
9	2		13-53472	Plate, Discharge Barrier
10	2		LAF3412	Hose Guard
11	2		M5454	Caster Handle
12	6		P100605	Bolt, Hex, 3/8-16 x 1 1/4
13	Varies	20	(22) P851106	Washer, Lock, 3/8
14	Varies	14	(16) RHW2207	Bolt, Carriage, Gr5, .31-16 x 1.25
15	Varies	22	(24) RHW5262	Washer, Flat, Gr5, .38
16	Varies	20	(22) RHW7201	Hex, Nut, Gr5, .38-16

NOTE: All parts are the same as 84 inch except for those parts numbered under the other model.

\* Specify Required Mounting when ordering.

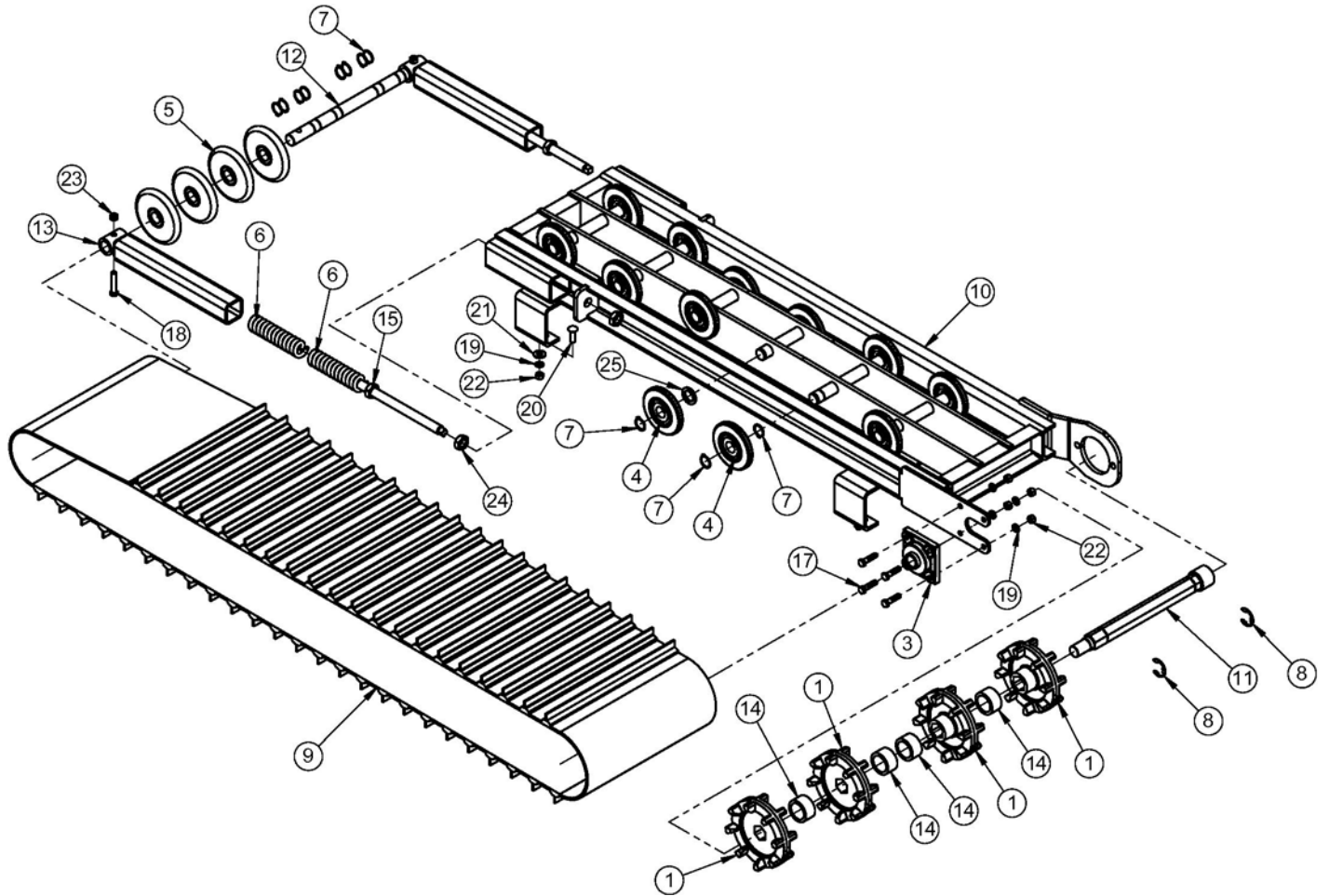
# SAWDUST BUCKET AGITATOR <sup>9.</sup>



ITEM	QTY.	72 inch	84 inch	DESCRIPTION
1	1	13-53243	13-53163	Weld, Agitator
2	1		LAF6532	Bearing, Flange, 2 Bolt
3	Varies	6	(7) 13-53166	Rubber, .75 x 5.25 x 9.63, with Holes
4	Varies	12	(14) P100606	Bolt, Hex, Gr5, 3/8 x 1 1/2
5	Varies	12	(14) RHW5262	Washer, Flat, Gr5, .38
6	Varies	12	(14) P851106	Washer, Lock, 3/8
7	Varies	12	(14) RHW7201	Nut, Hex, Gr5, .38-16
8	2		RHW1406	Screw, Hex, Gr5, .5-13 x 1.75
9	2		P851108	Washer, Lock, 1/2
10	2		RHW7401	Nut, Hex, Gr5, .5-13

NOTE: All parts are the same as 84 inch except for those parts numbered under the other model.

# SAWDUST BUCKET CONVEYOR



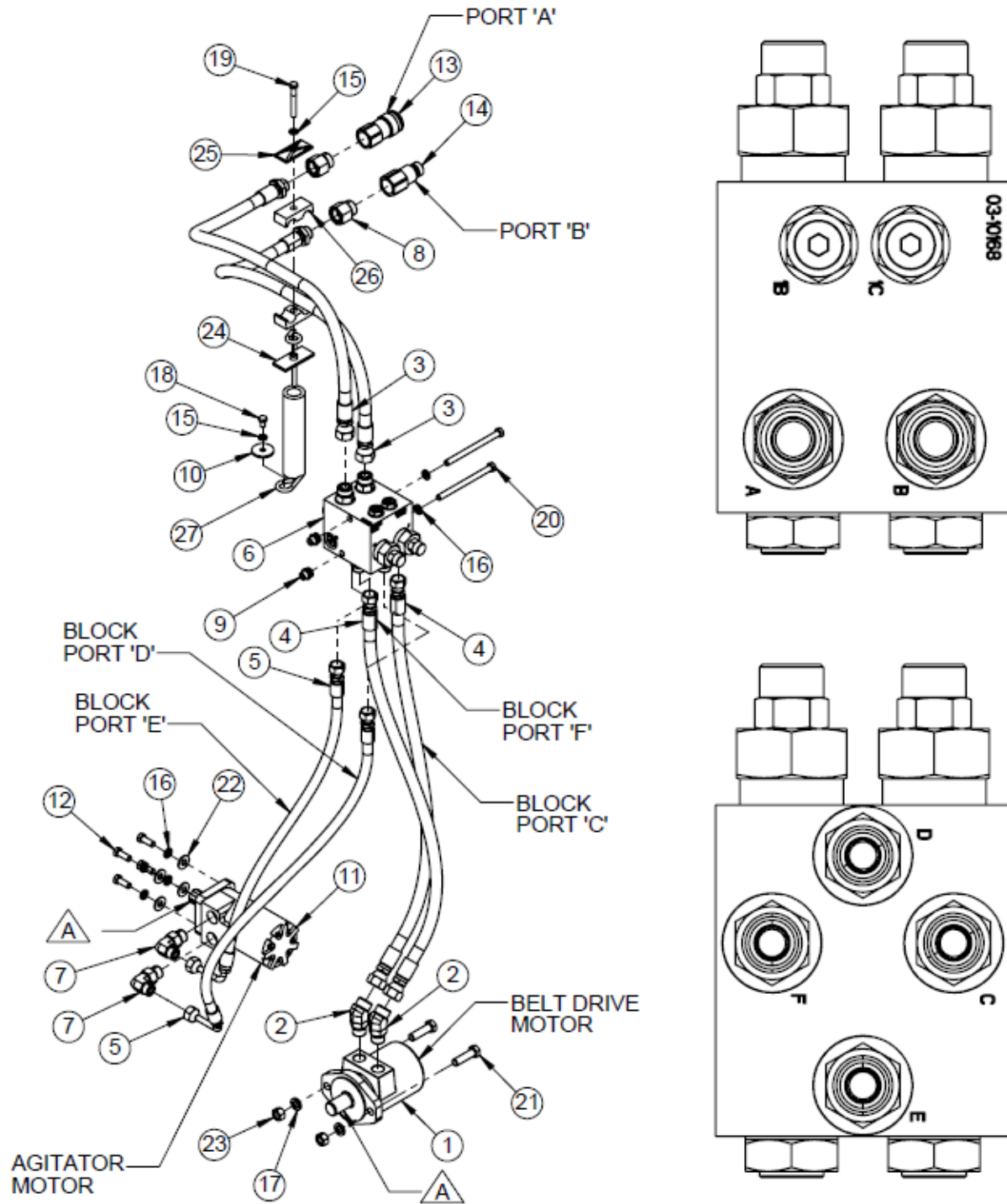
72" Model Shown

## SAWDUST BUCKET CONVEYOR

ITEM	QTY.	72 inch	84 inch	DESCRIPTION
1	4		07-10173	Sprocket, 8 Tooth, 2.52 Pitch
3	1		07-10176	Bearing, 4 Bolt, 1.25
4	Varies	12	(14) 07-10181	Roller, Urethane
5	4		07-10182	Idler, Wheel Bearing
6	4		07-10183	Idler, Spring
7	Varies	28	(30) 07-10184	Ring, External Retaining
8	2		07-10185	E-Clip, 1.19 Shaft .062
9	1	07-10191	07-10175	Belt, Sawdust
10	1	13-53033	13-53116	Weld, Conveyor Frame
11	1		13-53036	Weld, Hex Drive
12	1		13-53043	Rod, 1 x 15.5
13	2		13-53044	Weld, Idler, Arm
14	4		13-53046	Tube, Round, 2 x 1.5 x 1.06
15	2		13-53083	Weld, Spring, Tensioner
17	4		P100606	Bolt, Hex, Gr5, 3/8 x 1 1/2
18	2		P100608	Bolt, Hex, 3/8-16 x 2
19	8		P851106	Washer, Lock, 3/8
20	4		RHW2207	Bolt, Carriage, Gr5, .31-16 x 1.25
21	4		RHW5262	Washer, Flat, Gr5, .38
22	8		RHW7201	Nut, Hex, Gr5, .38-16
23	2		RHW7203	Nut, Lock, Gr5, .38-16
24	4		RHW7704	Nut, Hex, Jam, Gr5, .75-10
25	Varies	4	(6) RHW8603	Bushing, Machine, 1.5 x 1 x .13

NOTE: All parts are the same as 84 inch except for those parts numbered under the other model.

# SAWDUST BUCKET HYDRAULICS





## SAWDUST BUCKET HYDRAULICS

ITEM	QTY.	72 inch	84 inch	DESCRIPTION
1	1		03-10148	Motor, Conveyor, 5.0
2	2		03-10150	Elbow, 45°, 10MB-10MF
3	2		03-10161	Hose, .5 x 88, 10FF-10MB, 4K
4	2		03-10162	Hose, .5 x 38, 8FF-10FF, 4K
5	2		03-10163	Hose, .38 x 43, 8FF-8FF90 LG, 4K
6	1		03-10168	Valve, Flow Control, 0-30gpm
7	2		03-3489	Fitting, 8MF-10MB
8	2		03-4618	Fitting, 10FB-12MB
9	2		07-10151	Nut, Rivet, .375, .15-.312 Grip
10	1		105840	Washer, Fender
11	1		LAF4588	Motor, T-14.9
12	4		P100604	Bolt, Hex, 3/8 x 1
13	1		P272670	Quick Disconnect, 12FF, Female, 12FB
14	1		P272671	Quick Disconnect, 12FF, Male, 12FB
15	2		P851105	Washer, Lock, 5/16
16	6		P851106	Washer, Lock, 3/8
17	2		P851108	Washer, Lock, 1/2
18	1		RHW1101	Screw, Hex, Gr5, .31-18 x .5
19	1		RHW1112	Screw, Hex, Gr5, .31-18 x 2.5
20	2		RHW1221	Screw, Hex, Gr5, .38-16 x 5
21	2		RHW1406	Screw, Hex, Gr5, .5-13 x 1.75
22	4		RHW5262	Washer, Flat, Gr5, .38
23	2		RHW7401	Nut, Hex, Gr5, .5-13
24	1		RHW8613	Weld, Plate
25	1		RHW8614	Plate, Cover
26	1		RHW8616	Hose, Cradle
27	1		RHW8618	Hose, Spring

NOTE: All parts are the same as 84 inch except for those parts numbered under the other model.

# WARRANTY

## Limited Warranty

Except for the Excluded Products as described below, all new products are warranted to be free from defects in material and/or workmanship during the Warranty Period, in accordance with and subject to the terms and conditions of this Limited Warranty.

1. Excluded Products. The following products are excluded from this Limited Warranty:

(a) Any cable, part that engages with the ground (i.e. sprockets), digging chain, bearing, teeth, tamping and/or demolition head, blade cutting edge, pilot bit, auger teeth and broom brush that either constitutes or is part of a product.

(b) Any product, merchandise or component that, in the opinion of Spartan Equipment", has been (i) misused; (ii) modified in any unauthorized manner; (iii) altered; (iv) damaged; (v) involved in an accident; or (vi) repaired using parts not obtained through Spartan Equipment.

2. Warranty Period. The Limited Warranty is provided only to those defects that occur during the Warranty Period, which is the period that begins on the first to occur of: (i) the date of initial purchase by an end-user, (ii) the date the product is first leased or rented, or (iii) the date that is six (6) months after the date of shipment by Spartan Equipment as evidenced by the invoiced shipment date (the "Commencement Date") and ends on the date that is twelve (12) months after the Commencement Date.

3. Terms and Conditions of Limited Warranty. The following terms and conditions apply to the Limited Warranty hereby provided:

(a) Option to Repair or Replace. Spartan Equipment shall have the option to repair or replace the product.

(b) Timely Repair and Notice. In order to obtain the Limited Warranty, (i) the product must be repaired within thirty (30) days from the date of failure, and (ii) a claim under the warranty must be submitted to Spartan Equipment in writing within thirty (30) days from the date of repair.

(c) Return of Defective Part or Product. If requested by Spartan Equipment, the alleged defective part or product shall be shipped to Spartan Equipment at its manufacturing facility or other location specified by Spartan Equipment, with freight PRE-PAID by the claimant, to allow Spartan Equipment to inspect the part or product.

Claims that fail to comply with any of the above terms and conditions shall be denied.

### LIMITATIONS AND EXCLUSIONS.

**THIS LIMITED WARRANTY IS IN LIEU OF ALL OTHER WARRANTIES, EXPRESS OR IMPLIED, INCLUDING WITHOUT LIMITATION THE WARRANTIES OF MERCHANTABILITY, FITNESS FOR A PARTICULAR PURPOSE AND ANY WARRANTY BASED ON A COURSE OF DEALING OR USAGE OF TRADE.**

**IN NO EVENT SHALL SPARTAN EQUIPMENT BE LIABLE FOR CONSEQUENTIAL OR SPECIAL DAMAGES.**

**IN NO EVENT SHALL SPARTAN EQUIPMENT BE LIABLE FOR ANY LOSS OR CLAIM IN AN AMOUNT IN EXCESS OF THE PURCHASE PRICE, OR, AT THE OPTION OF SPARTAN EQUIPMENT, THE REPAIR OR REPLACEMENT, OF THE PARTICULAR PRODUCT ON WHICH ANY CLAIM OF LOSS OR DAMAGE IS BASED. THIS LIMITATION OF LIABILITY APPLIES IRRESPECTIVE OF WHETHER THE CLAIM IS BASED ON BREACH OF CONTRACT, BREACH OF WARRANTY, NEGLIGENCE OR OTHER CAUSE AND WHETHER THE ALLEGED DEFECT IS DISCOVERABLE OR LATENT.**

*February 10, 2010*

